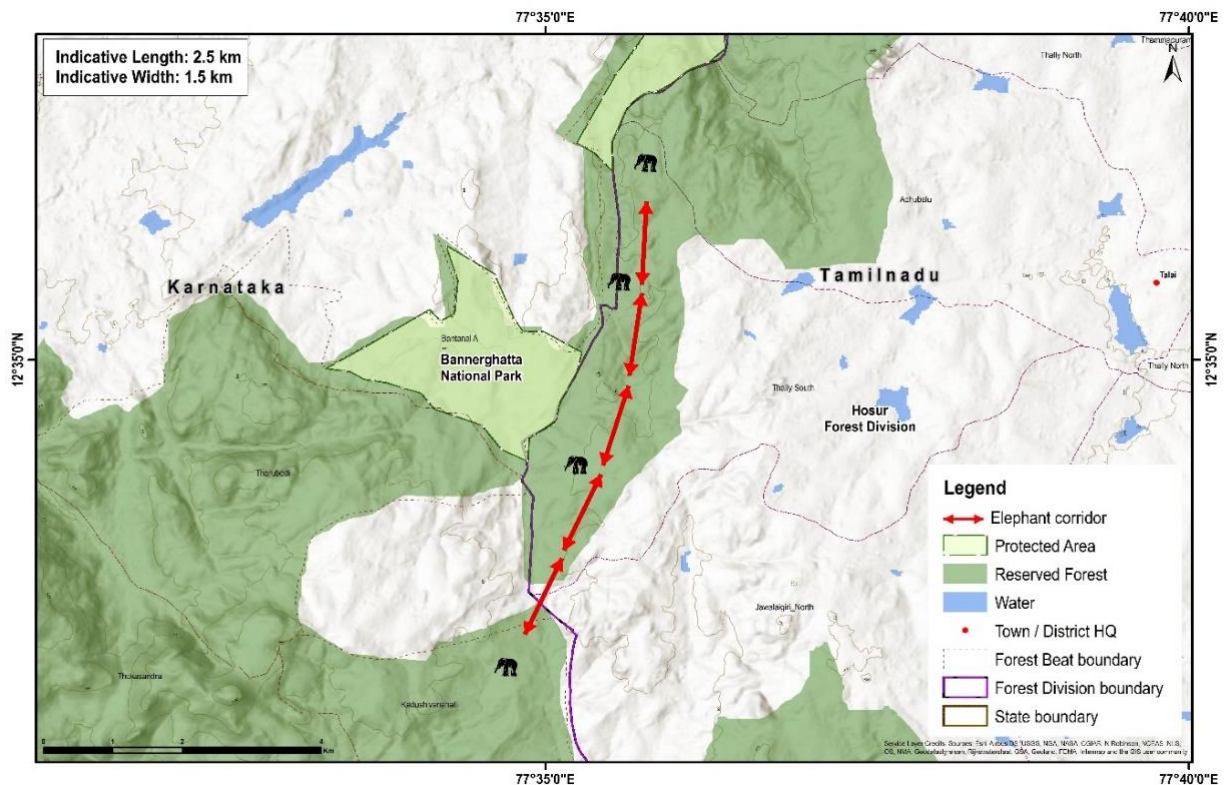


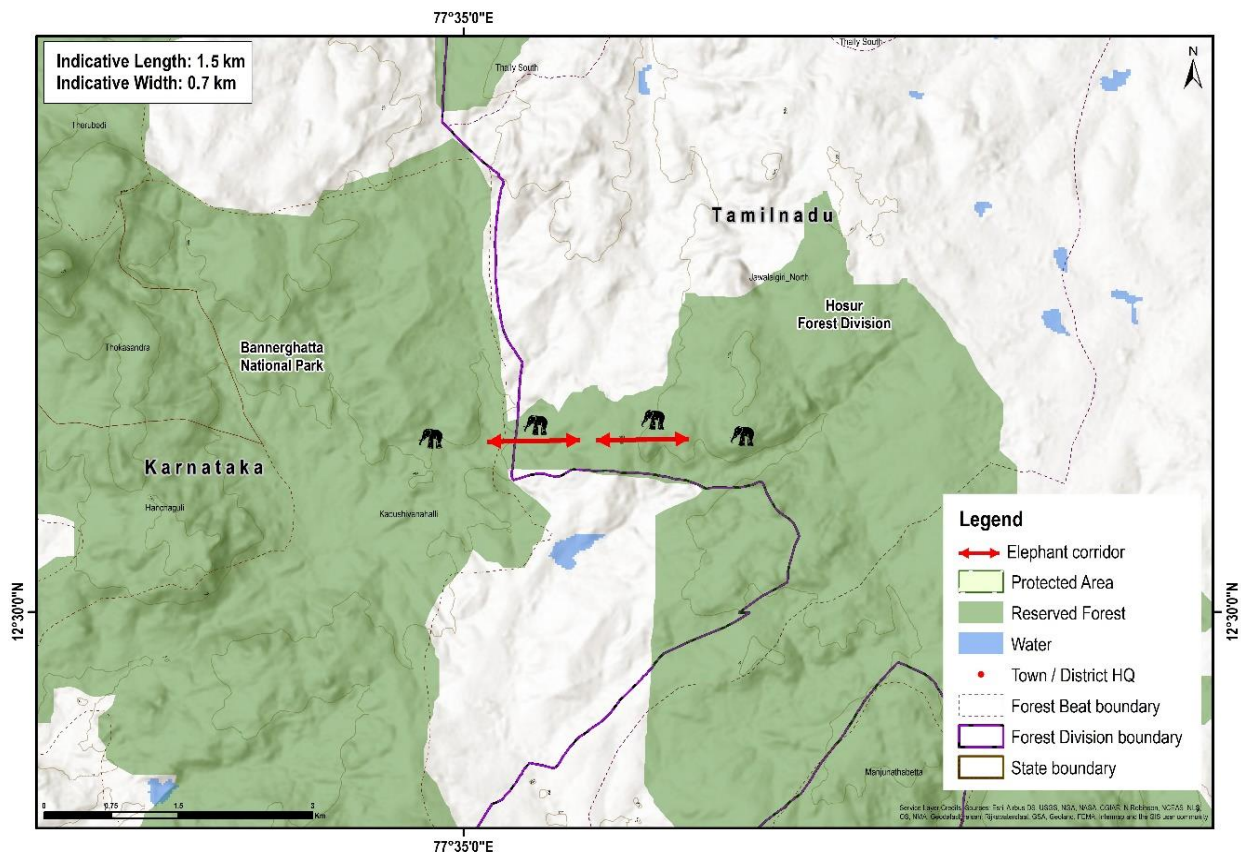
Thally – Bilikkal Corridor (Interstate corridor)

Connectivity	This corridor connects the Bannerghatta National Park of Karnataka with the North Cauvery Wildlife Sanctuary of Tamil Nadu.
State	Tamil Nadu and Karnataka
Indicative length and width	Length = 2.50 km, width = 1 km
Geo coordinates	12.577567° N, 77.591290° E 12.535615° N, 77.579358° E.
Forest ranges falling within corridor	Jawalagiri and Kodihalli ranges
Revenue villages falling within corridor	7
Habitat type	Southern Tropical Dry Mixed Deciduous Forest
Major land use	Forest = 3302.35 ha Agriculture = 500 ha Habitation = 250 ha
Elephant movement status	Regular
No. of elephants using the corridor	100 to 200
Major Bottleneck	1. Revenue land along the Dodduru – Belalam road that created a ca. 300-m gap in the habitat connectivity. 2. Elephant-proof barriers
Linear infrastructure in the corridor	1) Road from Thally to Maralavadi via Belalam and Therubidhi. 2) Road from Elavanathe to Hosadoddi. 3) Road from Therbidi to Kadusivanapalli. 4) 765 kV S/C Transmission line from Dharmapuri (Salem) to Madhugiri (Karnataka) is passing through Thally RF 5) 765 kV S/C Transmission line from Dharmapuri (Salem) to Madhugiri (Karnataka). 6) Elephant proof trench formed about 3 km in Thally RF and 3 km in Bannerghatta National Park in the corridor area.
Recommendations by the forest department to improve the corridor	1) The encroachment may be evicted in the corridor area. 2) Alternate revenue land near to the Town areas for the Patta holders / encroachers. 3) Habitat improvement works like removal of Invasive alien species, creation of waterholes and fodder plots inside the area will helps the elephant movement within the corridor.
Current Status of the corridor	Active. Intensity of use by elephants increased.



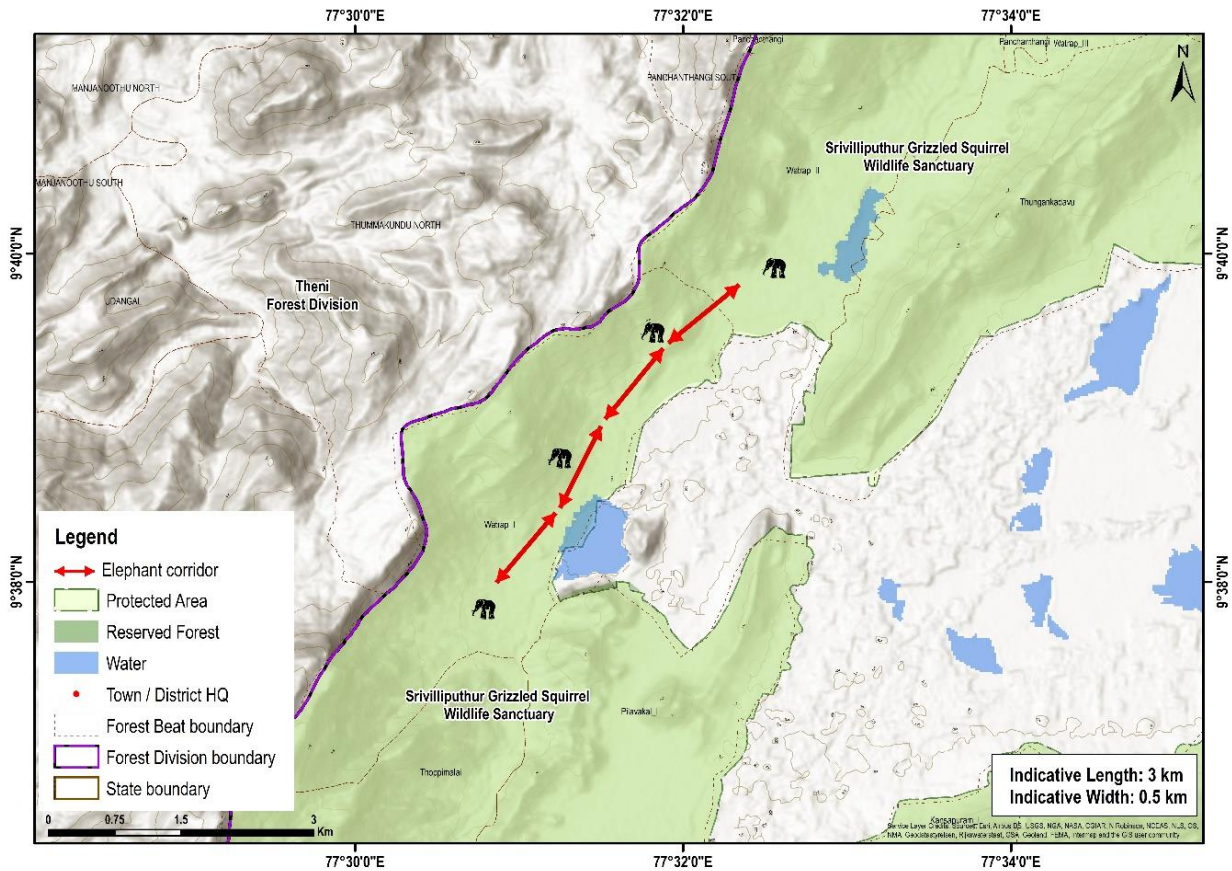
Bilikkal- Jawalagiri Corridor (Interstate corridor)

Connectivity	This corridor connects Bilikkal State Forest of Bannerghatta National Park, Karnataka, with Jawalagiri Reserve Forest of Cauvery North Wildlife Sanctuary, Tamil Nadu.
State	Tamil Nadu and Karnataka
Indicative length and width	Length = 1.5 km, width = 0.7 km
Geo coordinates	12.516164° N, 77.579524° E. 12.524220° N, 77.608672° E.
Beats falling within corridor	Jawalagiri North, Therubeedi, Yaluvantha and Kadusivanapalli Beat
Forest ranges falling within corridor	Jawalagiri (North Cauvery WLS), Kodihalli and Harohalli ranges (Bannerghatta NP)
Revenue villages falling within corridor	0
Habitat type	Southern Tropical Dry Mixed Deciduous Forest
Major land use	Forests Jawalagiri Reserved Forest = 3141.58 ha Bilikkal State Forest = 3500 ha
Elephant movement status	Regular
No. of elephants using the corridor	Around 200
Major bottleneck	Bandemuthappa temple in the Bilikkal State Forest areas along with the road that connecting to the temple located in the Bannerghatta National Park in Karnataka.
Linear infrastructure in the corridor	1) Road from Belalam and Kadusivanapalli. 2) Road from Elavanathe to Kadukempathpalli
Recommendations by the forest department to improve the corridor	1) Habitat improvement works like removal of Invasive alien species, creation of waterholes and fodder plots inside the area will helps the elephant movement within the corridor.
Current status of the corridor	Active. Intensity of use by elephants increased.



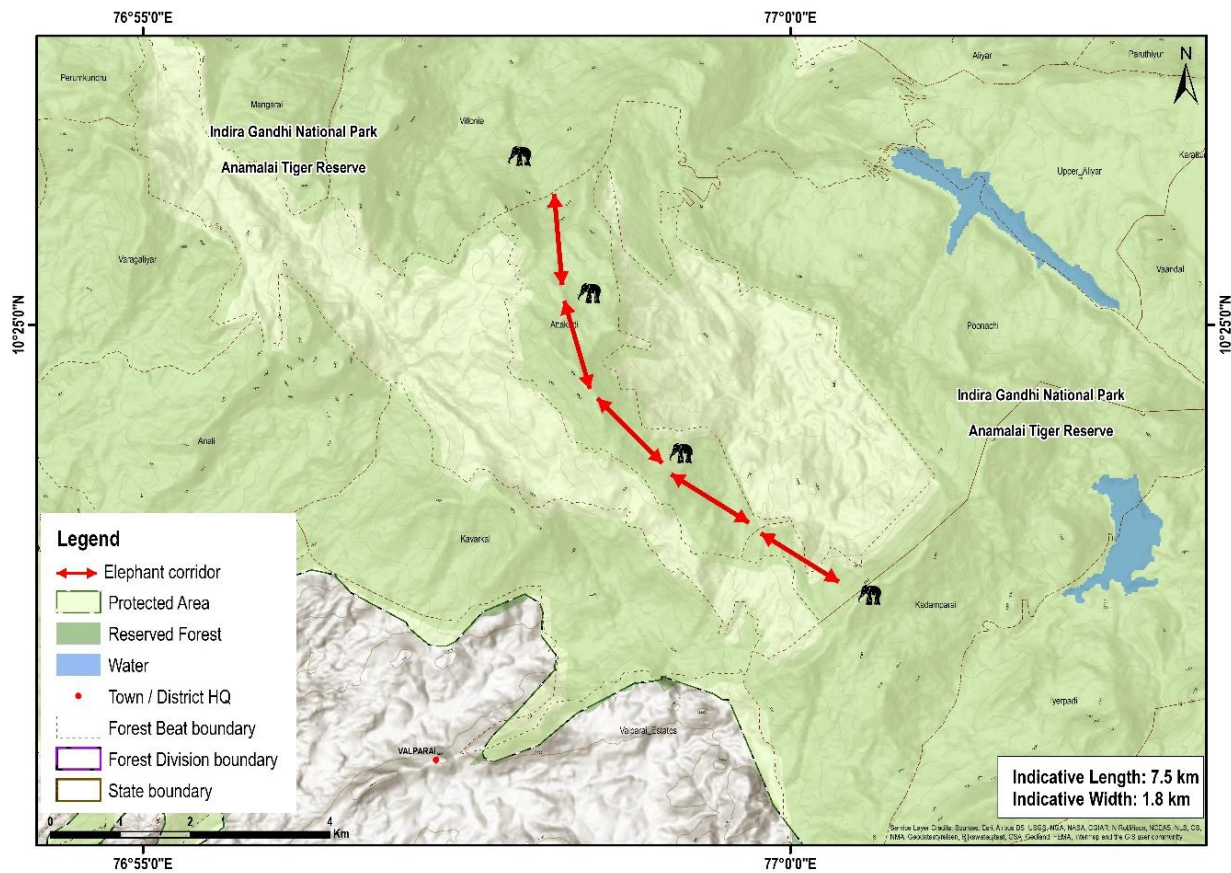
Srivilliputtur – Saptur Corridor

Connectivity	This corridor connects Saptur Reserve Forest with Srivilliputhur Reserve Forest of the Srivilliputhur Grizzled Squirrel Sanctuary.
State	Tamil Nadu
Indicative length and width	Length = 3 km, width = 0.5 km
Geo coordinates	N 9° 38' 3", E 77° 30' 39" N 9° 39' 48", E 72° 32' 14"
Beats falling within corridor	Beat I, II of Watrap range in Srivilliputhur sanctuary.
Forest ranges falling within corridor	Watrap range
Revenue villages falling within corridor	0
Ecological importance	This is a very important corridor facilitating movement of elephants in the South Western Ghats landscape complex comprising of Theni and Madurai Forest Divisions, and Srivilliputhur Wildlife Sanctuary, Megamalai Wildlife Sanctuary and the Periyar Tiger Reserve in Kerala.
Habitat type	Dry deciduous forest and agricultural lands
Major land use	Forest = 60.70 ha Agriculture = 75.70 ha
Elephant movement status	Seasonal
No. of elephants using the corridor	Around 20 - 30
Major bottleneck	Narrow forest patch between the two forest ranges
Linear infrastructure in the corridor	1) Canal, 2km 2) Power fence, 3 km
Recommendations by the forest department to improve the corridor	1) Increasing the width of the corridor is crucial 2) Regulation of tourism activities.
Current status of the corridor	Active. Intensity of use by elephants stable.



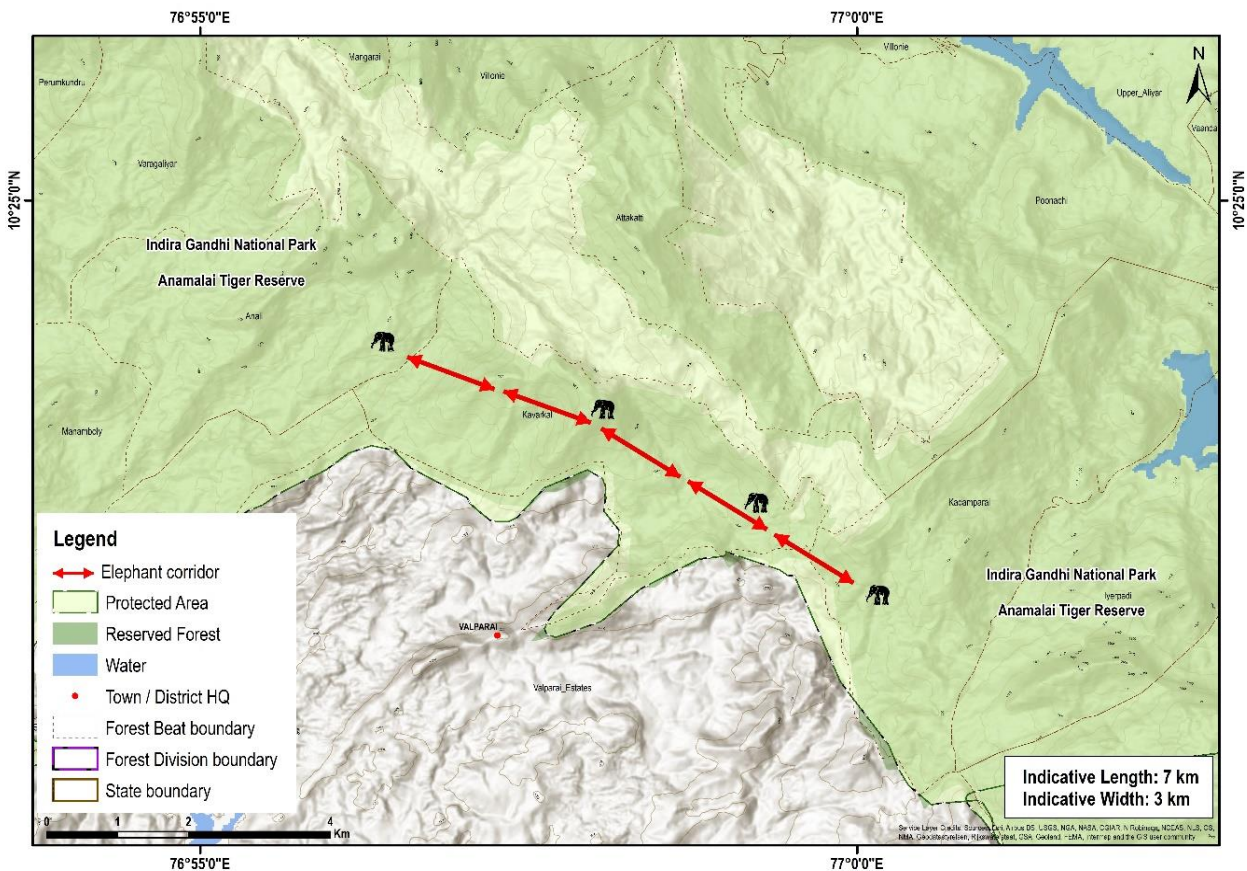
Anaimalai at Waterfalls Estate Corridor

Connectivity	This corridor links the habitats of the Valparai and Pollachi Ranges of the Anaimalai Tiger Reserve.
State	Tamil Nadu
Indicative length and width	Length = 7.5 km, width = 1.8 km
Geo coordinates	N 10° 22' 42", E 77° 0' 31" N 10° 26' 15", E 76° 57' 42"
Forest ranges falling within corridor	Valparai and Pollachi ranges of Anaimalai Tiger Reserve
Revenue villages falling within corridor	0
Ecological importance	This is an important corridor to connect the western part of the Anaimalai Tiger Reserve to the east. Many herds of elephants and solitary individuals use this corridor for local migration. This is an important corridor for tigers (<i>Panthera tigris</i>) too.
Habitat type	Tropical moist deciduous forest
Major land use	Tea plantations and forest
Elephant movement status	Seasonal, majorly between March- August
No. of elephants using the corridor	Information on intensity of use not available.
Major bottleneck	1) State Highway 78 (Pollachi- Valparai) at Andiparai shola 2) Tea estates like Waterfall and Waverly
Linear infrastructure in the corridor	1) 1.8km of State Highway 78 and associated high vehicular traffic 2) Tea factories of the estate
Recommendations by the forest department to improve the corridor	1) Regulating the road work undertaken, with special attention towards use of JCB and construction of revetment walls by the Highway department. 2) Regulating the number and speed of vehicles passing through the corridor.
Current status of the corridor	Active. Intensity of use by elephants stable



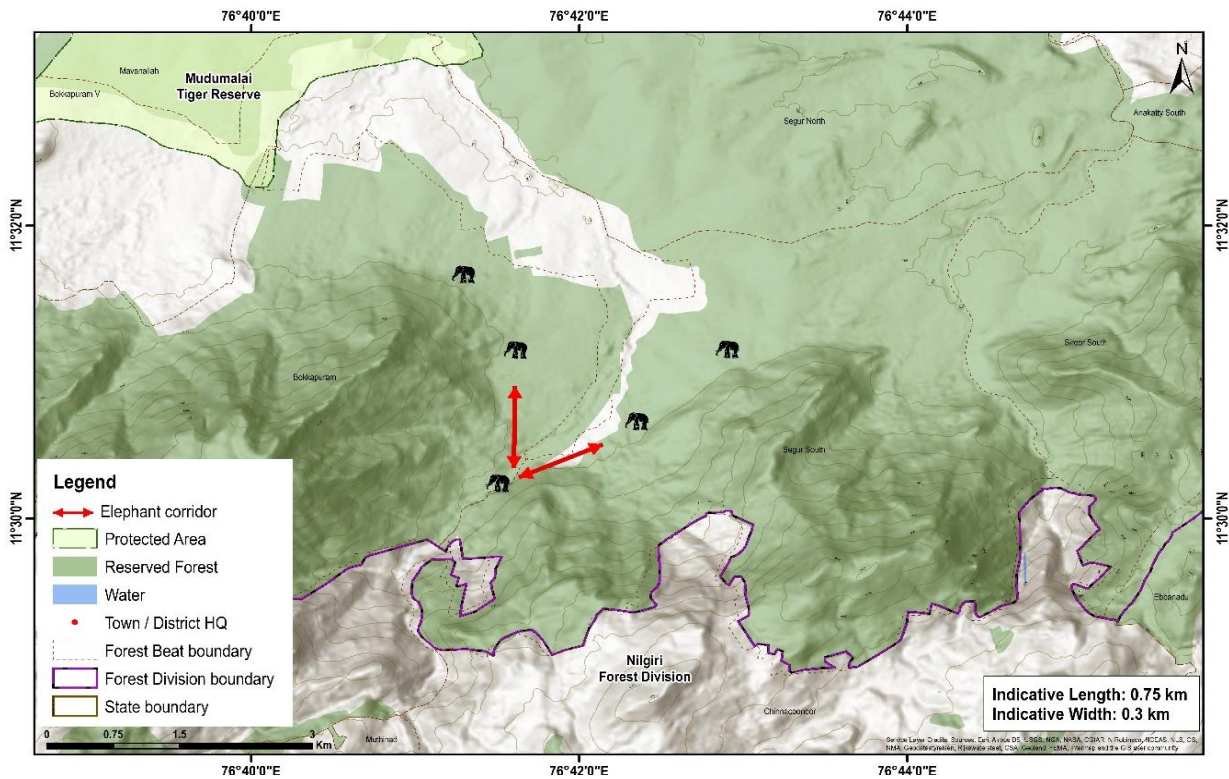
Siluvaimedu – Kadamparai Corridor

Connectivity	This corridor links the habitats of the Valparai and Manambolly Ranges of Anamalai Tiger Reserve.
State	Tamil Nadu
Indicative length and width	Length = 7 km, width = 2.7 km
Geo coordinates	N 10°24'34" - E 76°56'15", N 10°21'45" - E 77°0'14"
Forest ranges falling within corridor	Valparai, Manambolly and Pollachi ranges of Anamalai Tiger Reserve
Revenue villages falling within corridor	1
Ecological importance	This corridor connects the ranges of Valparai and Manambolly of Anamalai Tiger Reserve that extends till Parambikulam Tiger Reserve. This landscape also harbors high number of micro habitats like swamps that are favoured by elephants.
Habitat type	Tropical moist deciduous forest
Major land use	Forest Tea plantations
Elephant movement status	Regular
No. of elephants using the corridor	Around 50
Major bottleneck	Private estates near Iyerpadi shola
Linear infrastructure in the corridor	1) 1.8 km of State Highway 78, and associated high vehicular traffic 2) Tea factories of the estate
Recommendations by the forest department to improve the corridor	1) Encouraging people to use LPG instead of fuel wood to ease the pressure on corridor. 2) Regulation on the vehicular movement on State Highway 78. 3) Regulation on the tourism.
Current status of the corridor	Active. Intensity of use by elephants stable.



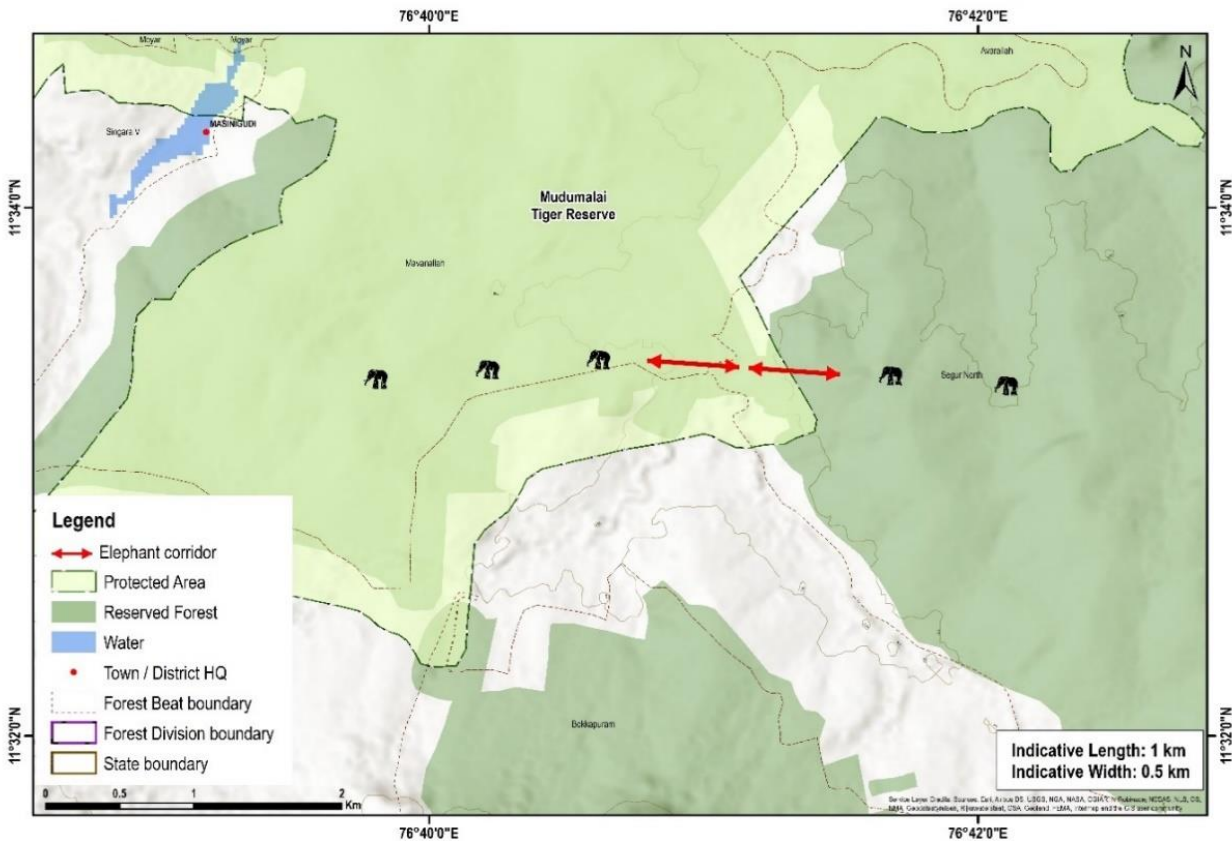
Kalhatti- Segur at Glencorin Corridor (Segur Corridor-1)

Connectivity	This corridor connects Kalhatti RF with Singara RF and is part of the Segur corridor with an extent of 3413.73 hectares covering four corridors declared as a Segur Plateau Elephant Corridor vide G.O.Ms No 125 E & F (FR.5) Dept Dated 31.08.2010
State	Tamil Nadu
Indicative length and width	Length = 23.5 km, width = 1.5 km
Geo Coordinates	1) N- 11.521750°, E- 76.53937° 2) N- 11.539190°, E- 76.64606° 3) N- 11.523191°, E- 76.73430° 4) N- 11.559855°, E- 76.68879°
Forest ranges falling within corridor	Segur, Singara and Masinagudi Ranges
Revenue villages falling within corridor	8
Ecological importance	Segur corridors are critical in facilitating elephant movement in the larger Mudumalai – Bandipur – Wayanad – Sathyamangalam complex of Western Ghats
Habitat type	Tropical thorn and deciduous forest
Major land use	Forest = 61,392 ha, Agriculture = 1,193 ha Habitation = 195.40 ha
Elephant movement status	Regular
No. of elephants using the corridor	61 (for the entire series of 4 Segur corridors as estimated by the forest department during the year 2023)
Major bottleneck	Habitations at Mavanallah, Bokkapuram and flume channel running across the Corridor from Masinagudi to Moyar
Linear infrastructure in the corridor	1) State Highway (Stretch I- 4.77 km, Stretch II- 1.71 km) and associated high traffic 2) 7 km of concrete flume hannel that runs from Masinagudi to Moyar 3) 2.09 km of Northern Hay and 3.27 km of Singara HT power lines 4) Establishments like schools, settlement, resorts and tourism infrastructure
Recommendations by the forest department to improve the corridor	1) Acquiring land at crucial bottle neck points. 2) Reengineering of canal and flume channel to facilitate wildlife movement 3) Regulation of tourism activities.
Current status of the corridor	Active. Intensity of use by elephants stable



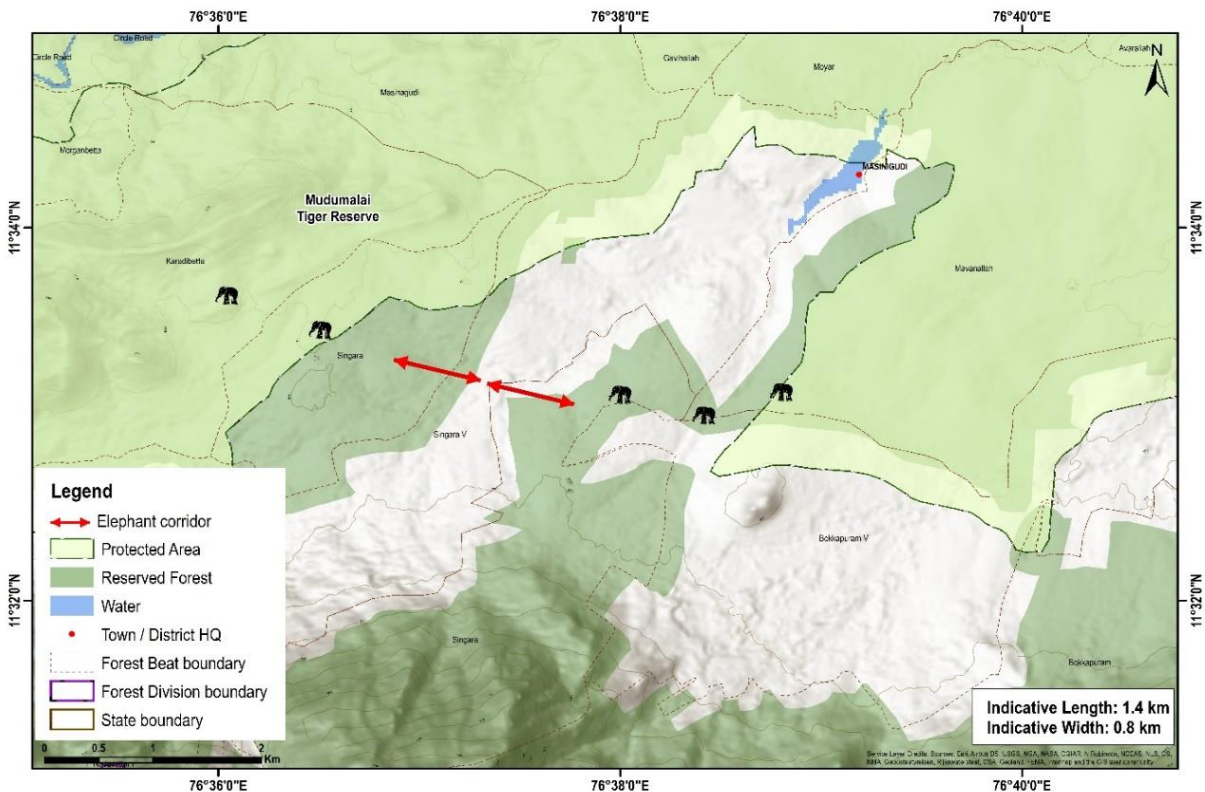
Avarahalla Sigur Corridor (Segur Corridor-2)

Connectivity	This corridor connects Avarahalla RF with Segur RF and is part of the Segur corridor with an extent of 3413.73 hectares covering four corridors declared as a Segur Plateau Elephant Corridor vide G.O.Ms No 125 E & F (FR.5) Dept Dated 31.08.2010
State	Tamil Nadu
Indicative length and width	Length = 23.5 km, width = 1.5 km
Geo Coordinates	1) N- 11.521750°, E- 76.53937° 2) N- 11.539190°, E- 76.64606° 3) N- 11.523191°, E- 76.73430° 4) N- 11.559855°, E- 76.68879°
Forest ranges falling within corridor	Segur, Singara and Masinagudi Ranges
Revenue villages falling within corridor	8
Ecological importance	Segur corridors are critical in facilitating elephant movement in the larger Mudumalai – Bandipur – Wayanad – Sathyamangalam complex of Western Ghats
Habitat type	Tropical thorn and deciduous forest
Major land use	Forest = 61,392 ha, Agriculture = 1,193 ha, Habitation = 195.40 ha
Elephant movement status	Regular
No. of elephants using the corridor	61 (for the entire series of 4 Segur corridors as estimated by the forest department during the year 2023)
Major bottleneck	Habitations at Mavanallah, Bokkapuram and flume channel running across the Corridor from Masinagudi to Moyar
Linear infrastructure in the corridor	1) State Highway (Stretch I- 4.77 km, Stretch II- 1.71 km) and associated high traffic 2) 7 km of concrete flume hannel that runs from Masinagudi to Moyar 3) 2.09 km of Northern Hay and 3.27 km of Singara HT power lines 4) Establishments like schools, settlement, resorts and tourism infrastructure
Recommendations by the forest department to improve the corridor	1) Acquiring land at crucial bottle neck points. 2) Reengineering of canal and flume channel to facilitate wildlife movement 3) Regulation of tourism activities.
Current status of the corridor	Active. Intensity of use by elephants stable.



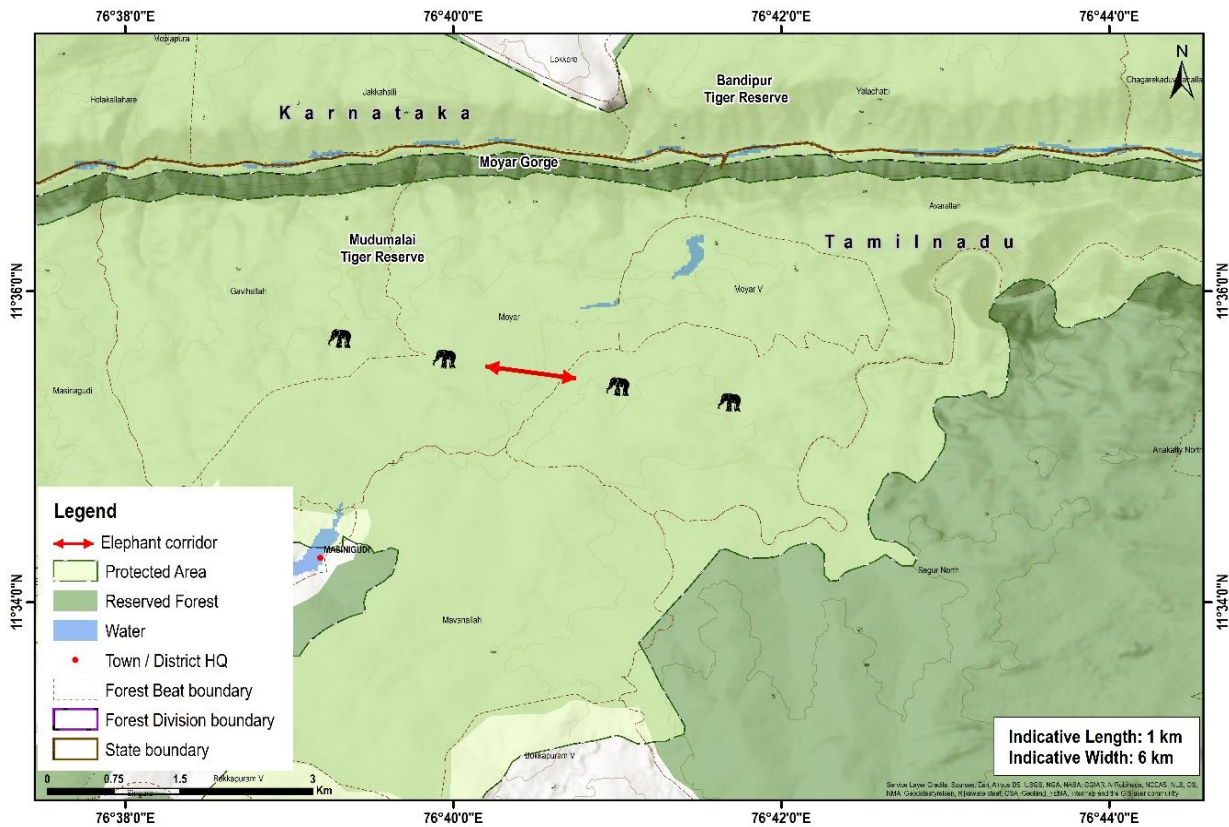
Kalmalai-Avarahalla-Singhara Corridor (Segur Corridor-3)

Connectivity	This corridor connects Kalmalai RF with Singara RF and Avarahalla RF, and is part of the Segur corridor with an extent of 3413.73 hectares covering four corridors declared as a Segur Plateau Elephant Corridor vide G.O.Ms No 125 E & F (FR.5) Dept Dated 31.08.2010
State	Tamil Nadu
Indicative length and width	Length = 23.5 km, width = 1.5 km
Geo Coordinates	1) N- 11.521750°, E- 76.53937° 2) N- 11.539190°, E- 76.64606° 3) N- 11.523191°, E- 76.73430° 4) N- 11.559855°, E- 76.68879°
Forest ranges falling within corridor	Segur, Singara and Masinagudi Ranges
Revenue villages falling within corridor	8
Ecological importance	Segur corridors are critical in facilitating elephant movement in the larger Mudumalai – Bandipur – Wayanand – Sathyamangalam complex of Western Ghats
Habitat type	Tropical thorn and deciduous forest
Major land use	Forest = 61,392 ha, Agriculture = 1,193 ha, Habitation = 195.40 ha
Elephant movement status	Regular
No. of elephants using the corridor	61 (for the entire series of 4 Segur corridors as estimated by the forest department during the year 2023)
Major bottleneck	Habitations at Mavanallah, Bokkapuram and flume channel running across the corridor from Masinagudi to Moyar
Linear infrastructure in the corridor	1) State Highway (Stretch I- 4.77 km, Stretch II- 1.71 km) and associated high traffic 2) 7 km of concrete flume hannel that runs from Masinagudi to Moyar 3) 2.09 km of Northern Hay and 3.27 km of Singara HT power lines 4) Establishments like schools, settlement, resorts and tourism infrastructure
Recommendations by the forest department to improve the corridor	1) Acquiring land at crucial bottle neck points. 2) Reengineering of canal and flume channel to facilitate wildlife movement 3) Regulation of tourism activities.
Current status of the corridor	Active. Intensity of use by elephants stable.



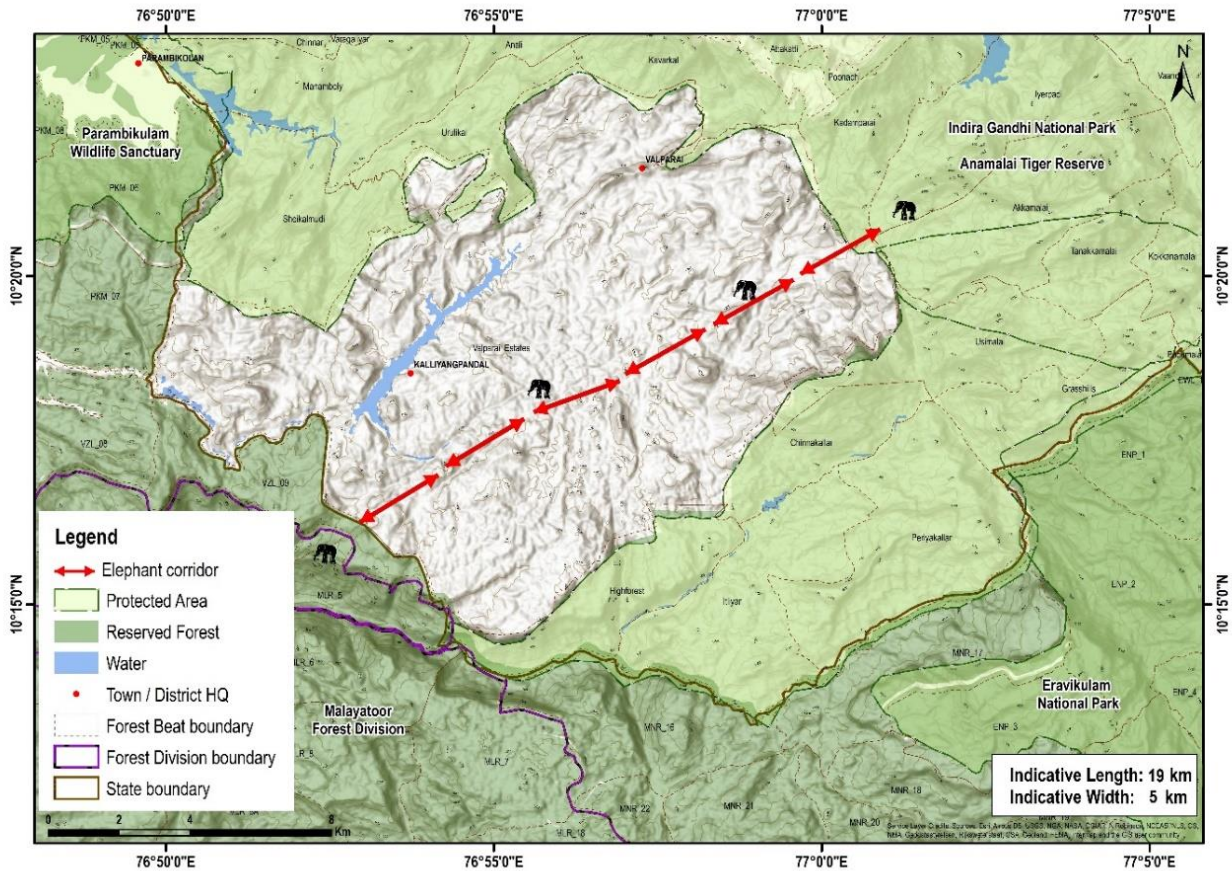
Moyar Avarahalla Corridor (Segur Corridor-4)

Connectivity	This corridor connects Moyar RF with Avarahalla RF and is part of the Segur corridor with an extent of 3413.73 hectares covering four corridors declared as a Segur Plateau Elephant Corridor vide G.O.Ms No 125 E & F (FR.5) Dept Dated 31.08.2010
State	Tamil Nadu
Indicative length and width	Length = 23.5 km, width = 1.5 km
Geo Coordinates	1) N- 11.521750°, E- 76.53937° 2) N- 11.539190°, E- 76.64606° 3) N- 11.523191°, E- 76.73430° 4) N- 11.559855°, E- 76.68879°
Forest ranges falling within corridor	Segur, Singara and Masinagudi Ranges
Revenue villages falling within corridor	8
Ecological importance	Segur corridors are critical in facilitating elephant movement in the larger Mudumalai – Bandipur – Wayanad – Sathyamangalam complex of Western Ghats
Habitat type	Tropical thorn and deciduous forest
Major land use	Forest = 61,392 ha, Agriculture = 1,193 ha, Habitation = 195.40 ha
Elephant movement status	Regular
No. of elephants using the corridor	61 (for the entire series of 4 Segur corridors as estimated by the forest department during the year 2023)
Major bottleneck	Habitations at Mavanallah, Bokkapuram and flume channel running across the Corridor from Masinagudi to Moyar
Linear infrastructure in the corridor	1) State Highway (Stretch I- 4.77 km, Stretch II- 1.71 km) and associated high traffic 2) 7 km of concrete flume hannel that runs from Masinagudi to Moyar 3) 2.09 km of Northern Hay and 3.27 km of Singara HT power lines 4) Establishments like schools, settlement, resorts and tourism infrastructure
Recommendations by the forest department to improve the corridor	1) Acquiring land at crucial bottle neck points. 2) Reengineering of canal and flume channel to facilitate wildlife movement 3) Regulation of tourism activities.
Current status of the corridor	Active. Intensity of use by elephants stable.



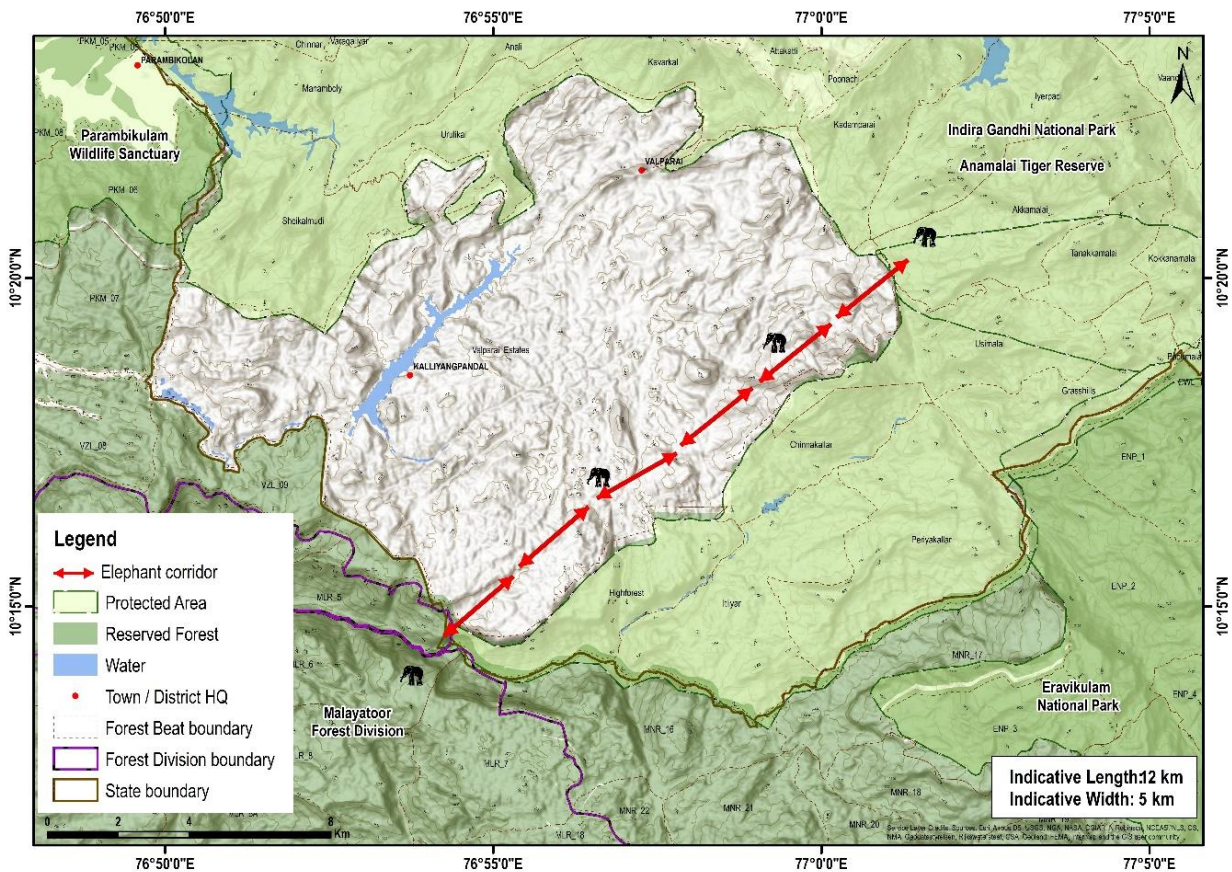
Sholayar Dam Corridor (Vazhachal – Anamalai via Sholayar)

Connectivity	This corridor links the habitats Kerala Reserve Forest boundary to Valparai Range of Anamalai Tiger Reserve
State	Tamil Nadu
Indicative length and width	Length = 19 km, width = 5 km
Geo Coordinates	N 10°18'38.03" - E 76°52'3.48", N 10°21'15.08" - E 76°59'39.20"
Forest ranges falling within corridor	Valparai Range
Revenue villages falling within corridor	4
Ecological importance	The connectivity between Malayattur Forest Division, Parambikulam Tiger Reserve of Kerala and Iyerpadi in Valparai of the Anamalai Tiger Reserve in Tamil Nadu is crucial for movement of elephants and other large animals including the tigers.
Habitat type	Evergreen Forest
Major land use	Forests, tea estates and PWD land
Elephant movement status	Regular,
No. of elephants using the corridor	Around 50
Major bottleneck	Sholayar dam, tea estate and river
Linear infrastructure in the corridor	1) Estate roads (20 km) 2) High tension power line- Sholayar I, II- 6 km and Urulikkal to Manambolly- 8 km 3) 15 Homestays and Resorts
Recommendations by the forest department to improve the corridor	Purchasing of land by the forest dept.
Current status of the corridor	Active. Intensity of use by elephants increased.



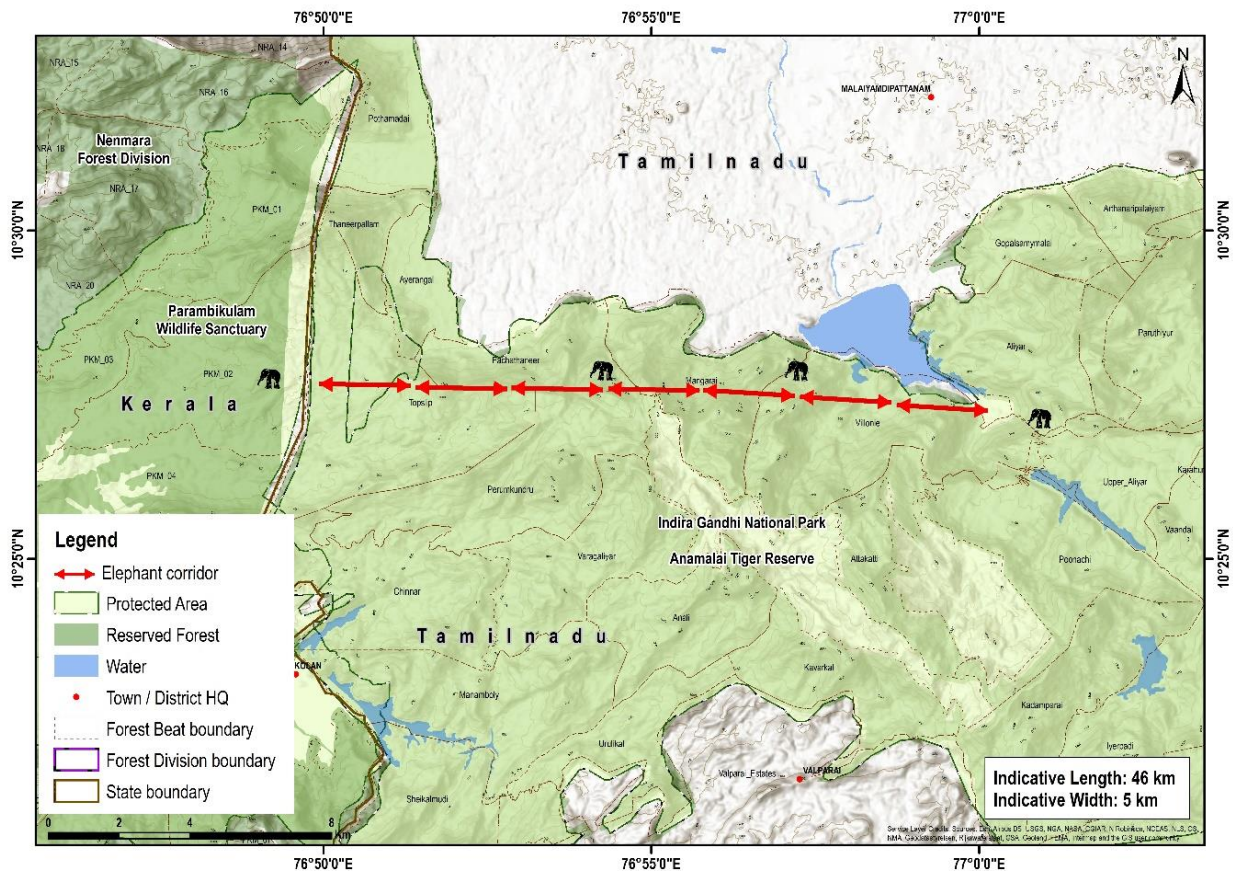
TANTEA Corridor (Vazhachal – Anaimalai via Ryan)

Connectivity	This corridor links the Manamboly Range to Valparai Range
State	Tamil Nadu
Indicative length and width	Length = 12 km, width = 5 km
Geo Coordinates	N 10°16'9.89" - E 76°57'45.68", N 10°17'18.77" - E 77°0'34.37"
Forest ranges falling within corridor	Valparai and Manamboly Range
Revenue villages falling within corridor	4
Ecological importance	The passage of Upasi to Chinnakallar is one of the most important pathways. This corridor acts as an important link connecting the protected areas of Tamil Nadu and Kerala, including Malayattur Forest Division.
Habitat type	Evergreen forest
Major land use	Forests and TANTEA leased land
Elephant movement status	Throughout the year, but high during certain seasons.
No. of elephants using the corridor	Around 50 elephants
Major bottleneck	1) TANTEA tea factory, 200 labor quarters
Linear infrastructure in the corridor	1) Estate roads (20 km) 2) High tension power line- Sholayar I, II- 6 km and Urulikkal to Manambolly- 8 km 3) 15 Homestays and Resorts
Recommendations by the forest department to improve the corridor	Leased areas in the corridor should be handed over to the Forest Department to maintain the integrity of the corridor.
Current status of the corridor	Active. Intensity of use by elephants increased.



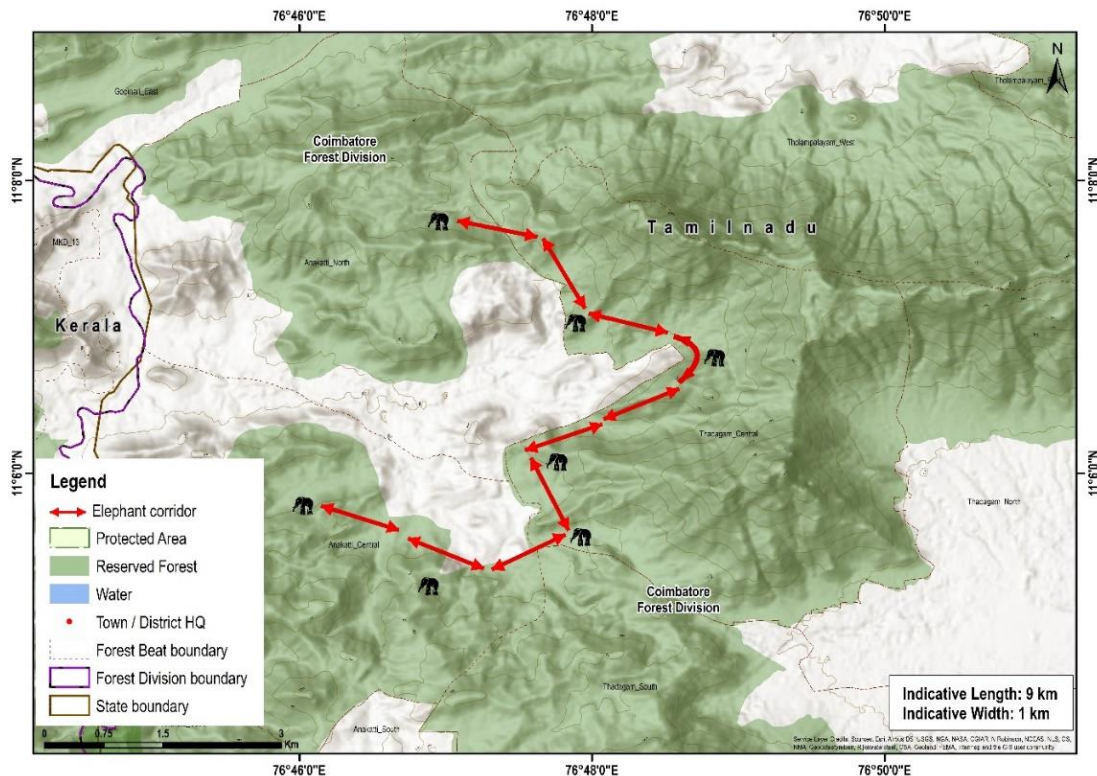
Topslip to Navamalai Corridor

Connectivity	This corridor links the Ulandy Range to Pollachi Range
State	Tamil Nadu
Indicative length and width	Length = 46 km, width = 5 km
Geo Coordinates	N 10°27'39.85" - E 76°49'47.88", N 10°27'13.22" - E 77°0'29.79"
Forest ranges falling within corridor	Ulandy and Pollachi Ranges
Revenue villages falling within corridor	8
Ecological importance	The passage of Topslip to Navamalai acts as a crucial link connecting several contiguous protected areas of Anamalai Tiger Reserve Forest.
Habitat type	Evergreen and Dry deciduous forest
Major land use	Forests PWD leased land (for PAP canal) Revenue land of settlements and coconut farms (60. 70 ha)
Elephant movement status	Regular
No. of elephants using the corridor	48
Major bottleneck	Highway road, Parambikulam-Aliyar contour canal
Linear infrastructure in the corridor	1) Around 10 km of State Highway (Aliyar – Valparai) 2) PAP Canal with concrete embankment, 15 km 3) Hanging fences around the patta land 4) Farm house in Navamalai area 5) Maitreyi Vedic village and Aliyar Arivuthirukovil
Recommendations by the forest department to improve the corridor	Purchasing of some of the revenue land by the forest dept.
Current status of the corridor	Active. Intensity of use by elephants increased.



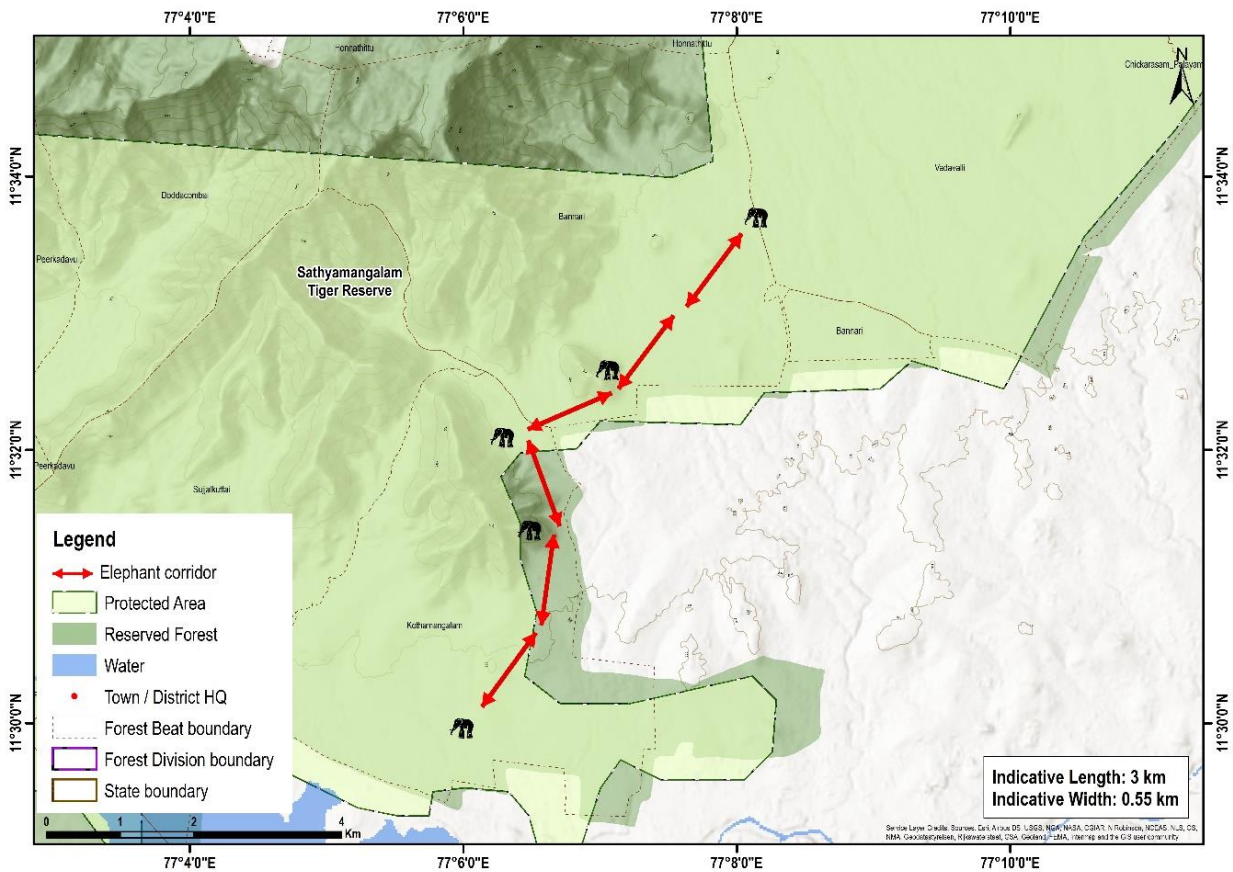
Anaikatti North- Anaikatti South Corridor

Connectivity	This corridor connects Anaikatti North Reserve Forest to Anaikatti South Reserve Forest
State	Tamil Nadu
Indicative length and width	Length = 9 km, Width = 1 km
Geo Coordinates	11.0856° N, 76.7750° E 11.1328° N, 76.8164° E
Forest ranges falling within corridor	Coimbatore and Periyakanpalayam Ranges of Coimbatore Forest Division
Revenue villages falling within corridor	0
Ecological importance	Facilitates elephant movement from Mannarkad Forest Division of Kerala into undulating terrain of Coimbatore Forest Division which is functionally connected landscape with Sathymangalam Tiger Reserve.
Habitat type	Tropical thorn and deciduous forest.
Major land use	Forest (8 sq.km), Agriculture, settlements, Institutions, holiday homes, resorts, brick kiln industries, revenue lands and roads. Except 74.6 acres of land that has been individual to secure the corridor, the rest of it is under Reserve Forest.
Elephant movement status	Regular
No. of elephants using the corridor	NA
Major bottleneck	SACON entrance, Kandivazhi tribal settlement and Panapally village
Linear infrastructure in the corridor	1) Coimbatore - Anaikatti State Highway, 3.9 km 2) Brick kilns 3) Establishments like Salim Ali Center for Ornithology and Natural History, Karl Kubel Institute, PSG Institution and Swami Dayanand Saraswati Ashram, and numerous resorts along the forest fringes.
Recommendations by the forest department to improve the corridor	1) About 25.7 acres of private land and 48.94 acres of revenue lands (identified in the Right of passage book by Wildlife Trust of India) have to be acquired to increase the width of the elephant corridor 2) The landscape section between Anaikatti Reserve Forest and Gopanari reserve Forest with a width of about 1km between Melbavivillage and Gopanari villages through which a road passes connecting Velliangadu and Anaikatti has to be included as corridor. 3) Proposing a new corridor named "Bolampatti Block 2 and Bolampatti Block 3" near the area Valkkarudu at the juncture of Devarayapuram and Vellimalai Pattinam revenue villages.
Current status of the corridor	Active. Intensity of use by elephants stable.



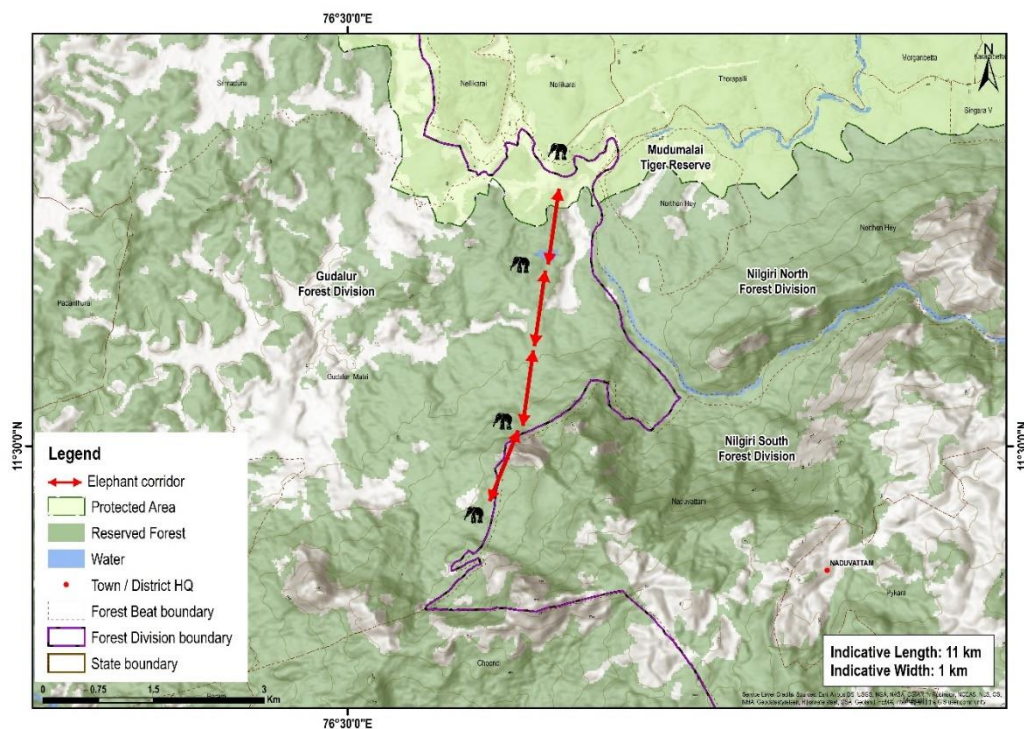
Talamalai – Guthiyalathur Corridor

Connectivity	This corridor connects Talamalai Reserve Forest (in the upper plateau) to the Guthiyalathur Reserve Forest (in the lower plateau) located near 1 st bend of the National Highway 209 from Bannari to Chamrajnagar.
State	Tamil Nadu
Indicative length and width	Length = 3 km, width = 0.5 km
Geo Coordinates	N 11°30'31" - E 77°5'4" N 11°33'37" - E 77°8'26"
Forest ranges falling within corridor	Sathyamangalam, Bhavani Sagar, and Talamalai Ranges
Ecological importance	This is a very important corridor used by large number of elephants and other wildlife including tigers (<i>Panthera tigris</i>). The corridor is located along the foothills of the Talamalai hills, where the habitat is narrow and surrounded by agricultural areas. Elephant movement from Bhavanisagar range into Sathyamangalam range is particularly facilitated by this corridor.
Habitat type	Tropical thorn and deciduous forest
Major land use	Forest
Elephant movement status	Regular, movement is high during October to December
No. of elephants using the corridor	Around 770 elephants occur in the park and many of them use this corridor
Major bottleneck	The shooting range of STF near Puthubeerkadavu and few resorts and ashrams located near the forest boundary.
Linear infrastructure in the corridor	Sathyamangalam Chamrajnagar National Highway (NH 209)
Recommendations by the forest department to improve the corridor	Taking over the ashram land near Puthubeerkadavu and increasing the width of the natural habitats.
Current status of the corridor	Active. Intensity of use by elephants stable.



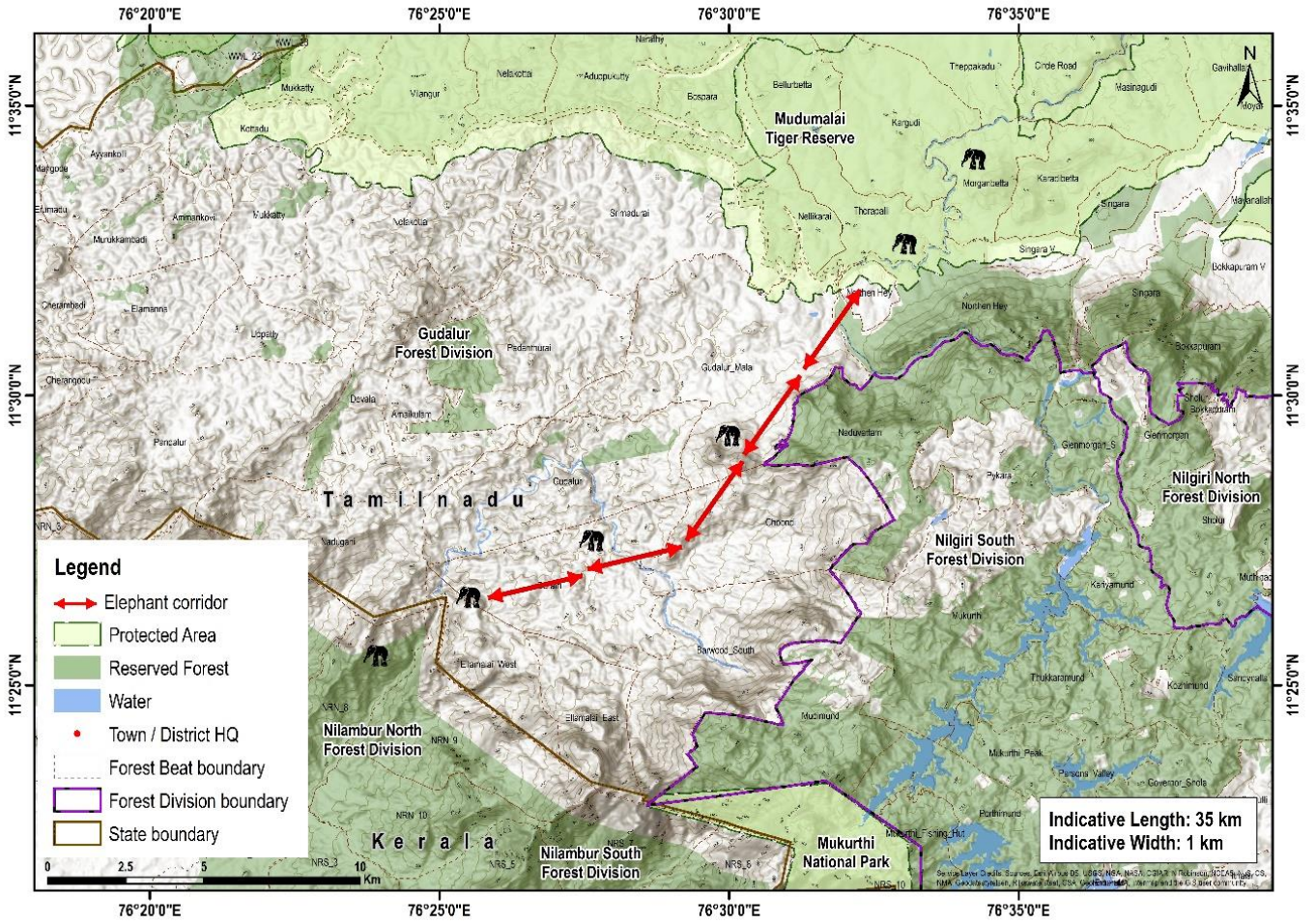
Mudumalai - Mukuruthi Corridor

Connectivity	This corridor connects Mudumalai Tiger Reserve to Mukuruthi National Park
State	Tamil Nadu
Indicative length and width	Length = 11 km, width = 1 km
Geo Coordinates	76 31' 31.07 E, 11 31' 32.04 N 76 30' 59.73 E, 11 29' 34.25 N
Forest ranges falling within corridor	Gudalur, Naduvattam and Northern Hay Ranges
Revenue villages falling within corridor	7
Ecological importance	This corridor connects Mudumalai Tiger Reserve and Mukuruthi National Park providing permeability for elephants to move from dry thorn and dry deciduous habitats to evergreen and <i>shola</i> habitats of the upper Nilgiris.
Habitat type	Moist deciduous, Semi-evergreen, Shola and Grasslands and Monoculture plantations.
Major land use	Forest and associated natural habitats, tea and coffee plantation and human settlements.
Elephant movement status	Seasonal, movement is high in months of August to November.
No. of elephants using the corridor	60- 80
Major bottleneck	1) In lower elevation Deivamalai village and the Silver Cloud estate. 2) In between upper elevation (TANTEA) and lower elevation (Silver cloud estate) only 300 m length of forests are available. 3) In upper elevation only 200m forest area is available between Royal valley and Outcherlony estates. 4) National Highway 67, Silver cloud tea factory.
Linear infrastructure in the corridor	1) National Highway 67 and associated high traffic 2) State Highway (Gundalpet - Coimbatore). 3) 40 km of High tension power line (11,000 KV)
Recommendations by the forest department to improve the corridor	1) Immediate taking over possession of the large tract of Janmam lands from the plantations, whose lease period has expired long back and notifying these private lands as Reserved Forests for corridor protection in Gudalur Division. 2) Regulation for land use and land cover changes in private lands also needed. 3) Schools and Colleges which are located in the peripheral areas should be targeted for awareness education 4) Corridor needs to be notified to check the rapid developments in the corridor. 5) The corridor is newly identified; hence need more detailed study/ground truth information in future for more scientific information.
Current status of the corridor	Active. Intensity of use by elephants stable.



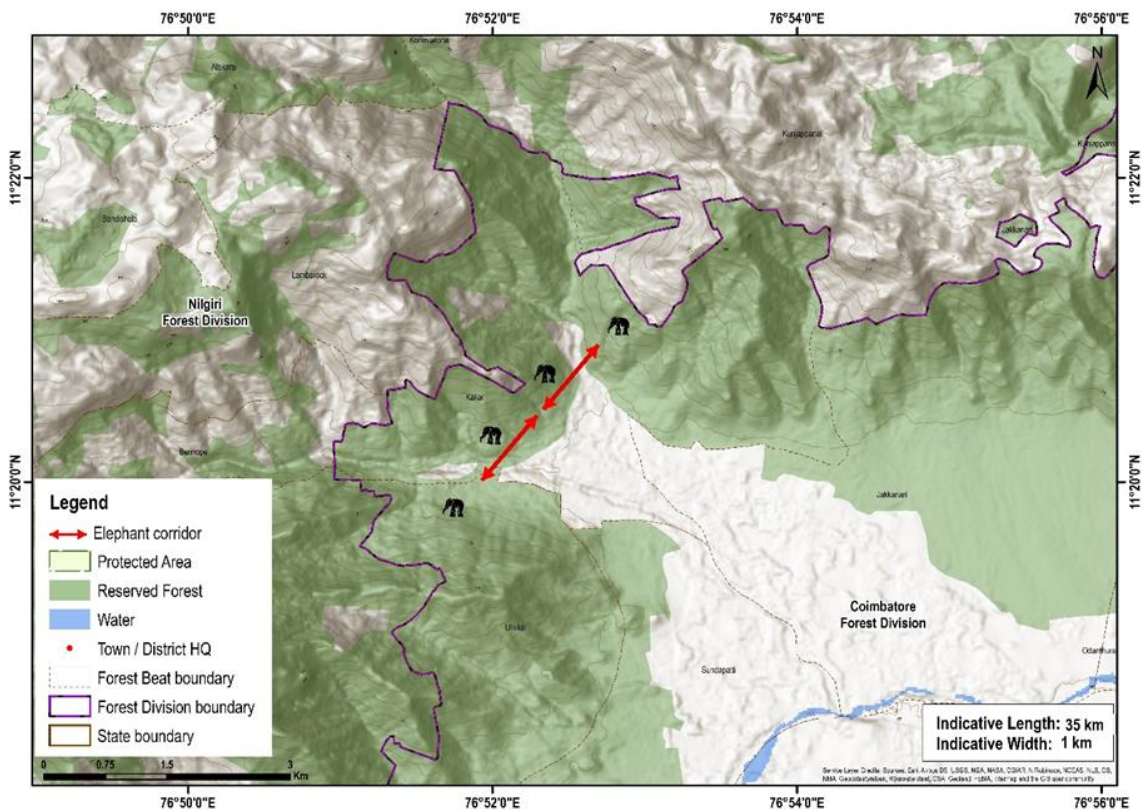
Mudumalai- Nilambur via O' Valley Corridor (Interstate corridor)

Connectivity	This corridor connects Mudumalai Tiger Reserve of Tamil Nadu to Nilambur North Forest Division in Kerala via Gudalur Forest Division in Tamil Nadu.
State	Tamil Nadu and Kerala
Indicative length and width	Length = 35 km, width = 1 km
Geo Coordinates	76 31' 47.725 E, 11 32' 53.874 N 76 24' 34.841 E, 11 25' 30.235 N
Forest ranges falling within corridor	Gudalur, Naduvattam and O Valley Ranges
Revenue villages falling within corridor	31
Ecological importance	This corridor is the major connectivity between Mudumalai Tiger Reserve and Nilambur Forest Division elephant population.
Habitat type	Moist deciduous and semi-evergreen forests
Major land use	Forest = 5209 ha Agriculture/estates = 3408 ha Habitation = 1311 ha
Elephant movement status	Regular but peak during south west monsoon season
No. of elephants using the corridor	Around 60
Major bottleneck	1) National Highway 67 2) Silver cloud tea factory 3) 27th mile village 4) Labour lines of Manjushree Estate, O'Valley.
Linear infrastructure in the corridor	1) National Highway 67 and associated high vehicular traffic 2) State Highway (Gundalpet - Coimbatore) and Gudalur to Nilambur via Nadugani, Manjeri and associated high vehicular traffic 3) High tension power line (11,000 Kv), 40 kms 4) Working Manjushree Factory (Smokehouse) at Guind, Silver cloud tea factory and Periyashola tea factory 5) Non-working factories like Bharathinagar Factory and Seaforth factory. 6) Government offices like Municipality and Panchayat offices, Police station
Recommendations by the forest department to improve the corridor	1) Relocation of public from fragmented areas of O'Valley range through proper schemes. 2) Immediate taking over possession of the large tract of Janmam lands from the plantations, whose lease period has expired long back and notifying these private lands as Reserved Forests for corridor protection. 3) As a short-term remedy, Elephant Proof Trench (EPT) and other preventive methods can be resorted to this may provide some immediate relief. 4) Regulation for land use and land cover changes in private lands also needed. 5) Schools and Colleges which are located in the peripheral areas should be concentrated on for awareness education in order to develop green and animal lovers for future generations. 6) More importantly the corridor needs to be notified and should have guidelines to check the rapid developments in the corridor.
Current status of the corridor	Active. Intensity of use by elephants increased.



Jaccanaire Slope - Hulikal Durgam - Nellithurai – Koothamandi south (Kallar corridor)

Connectivity	Sathyamangalam Tiger Reserve and south of Coimbatore FD/ Attapadi (through Mettupalayam and Sirumugai Forest Ranges; Nellithurai, Nellimalai, Hulikal, Jacanare, Odanthurai reserve forests)
State	Tamil Nadu
Indicative length and width	Length = 35 km, width = 1 km
Geo Coordinates	11° 19' 30"- 11° 21' 26" N / 76° 50' 52"- 76° 54' 12" E
Forest ranges falling within corridor	Mettupalayam and Sirumugai Forest Ranges
Revenue villages falling within corridor	6
Ecological importance	It is the only link between Sathyamangalam Tiger Reserve and southern Coimbatore elephant populations.
Habitat type	Dry thorn, Dry and moist deciduous forest types
Major land use	Forests, Agricultural land, Settlements and River
Elephant movement status	Regular
No. of elephants using the corridor	100- 150
Major bottleneck	1) Between Kallar first hairpin bend and Dhooripalam (Private lands), 2) Swamy Sachidananda Jyothi Niketan School, 3) Forest College and Research Institute, 4) Alur Vayal.
Linear infrastructure in the corridor	1) National Highway 181, 5 km and State Highway – Mettupalayam to Kotagiri, 2 km 2) Mountain train track, 5 km; 3) High-tension power line; 4) Elephant Proof Trench along the forest boundary, 30 km; 5) FCRI fence and EPT, 6 km; 6) Kallar Horticultural Garden electric fence, 2 km; 7) Private lands erected electric fence., 27 km; 8) Compound wall by Black thunder and Sachidanandha school, 2.2 km
Recommendations by the forest department to improve the corridor	1) Over pass have to be constructed in National Highway – 181 and State Highway (Mettupalayam – Kotagiri Road) 2) Acquisition of private lands to the south of NH - 181, between Forest check-post & First hairpin bend (app. 30 acres) or easement agreement with private land owners 3) Acquisition of private lands at Alur vayal or removal of power fences in the corridor or easement agreement with land owners. 4) Reduce the FCRI boundary by amending the lease agreement 5) Regulate the land use within the corridor area
Current status of the corridor	Active. Intensity of use by elephants not available



Anamalai at Punachi Corridor

Connectivity	Punachi Reserve Forest with Anaimalai Reserve Forest of Anaimalai Tiger Reserve
State	Tamil Nadu
Indicative length and width	Length = 4 km, width = 1.6 km
Geo Coordinates	10° 25' 3" - 10° 26' 42" N 76° 58' 34" - 77° 0' 46" E
Forest ranges falling within corridor	Valparai
Revenue villages falling within corridor	1
Ecological importance	The corridor used to connect Punachi Reserve Forest and Anamalai Reserve Forest within Anamalai Tiger Reserve.
Habitat type	Tropical moist deciduous forest
Major land use	Forest
Elephant movement status	None
No. of elephants using the corridor	None
Linear infrastructure in the corridor	State Highway 78 and associated traffic
Conservation Recommendations by the forest department	1) The corridor should be notified and legally protected by the state forest department under an appropriate law, and action should be taken to prevent developmental activities hindering elephant movement. 2. Vehicular speed should be regulated on the Valparai ghat road and visitors prevented from stopping. Suitable signage could also be placed to create awareness about the corridor and its importance
Status of the corridor	Impaired

